

Investor Information

As of March 31, 2008

Shin-Etsu Chemical Co., Ltd.

Head Office: 6-1, Ohtemachi 2-chome,
Chiyoda-ku, Tokyo 100-0004, Japan

Date of Establishment:

September 16, 1926

Capital:

¥119,420 million

Number of Employees:

20,241 (including 69 consolidated subsidiaries)

Number of Shares Authorized:

1,720,000,000

Number of Shares Issued:

432,106,693

Number of Shareholders:

64,808

Fiscal Year-End:

March 31

Shareholders' Meeting:

June

Stock Listings:

Tokyo, Osaka, Nagoya (Ticker Code: 4063)

Transfer Agent:

Mitsubishi UFJ Trust and Banking Corporation

Auditor:

Ernst & Young ShinNihon

Please visit our website:



<http://www.shinetsu.co.jp>
(English, Japanese and Chinese)

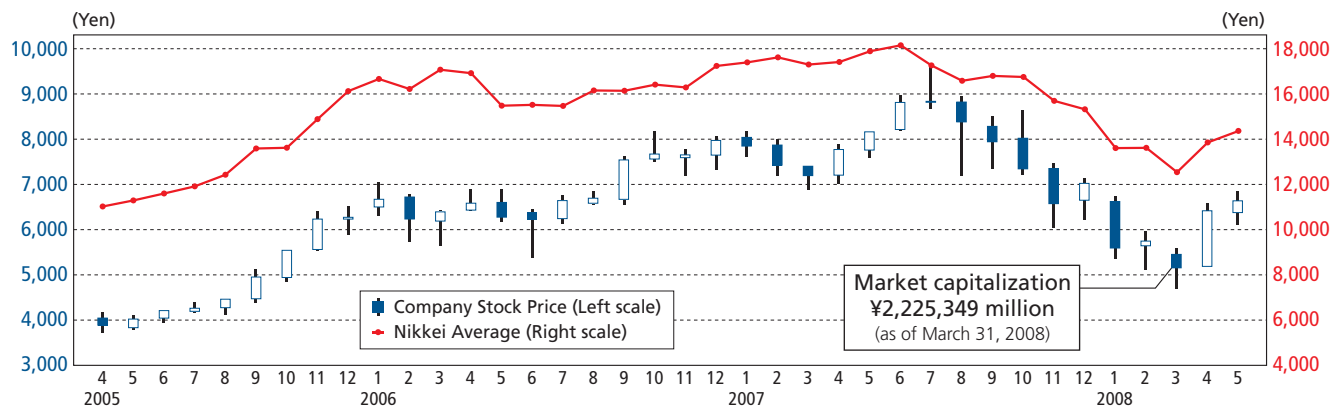
Major Shareholders:

Name	Number of Shares (Thousands)	Percentage of Total Equity (%)
The Master Trust Bank of Japan, Ltd. (Trust account)	42,218	9.8
Japan Trustee Services Bank, Ltd. (Trust account)	34,320	8.0
Nippon Life Insurance Company	24,370	5.7
Japan Trustee Services Bank, Ltd. (Trust account 4)	14,436	3.4
The Hachijuni Bank, Ltd.	11,790	2.7
Meiji Yasuda Life Insurance Company	11,529	2.7
NIPPONKOA Insurance Co., Ltd.	10,077	2.3
The Bank of Tokyo-Mitsubishi UFJ, Ltd.	7,095	1.6
State Street Bank and Trust Company 505103	6,467	1.5
Fukoku Mutual Life Insurance Company	5,600	1.3

Information:

Public Relations Department
6-1, Ohtemachi 2-chome, Chiyoda-ku, Tokyo 100-0004, Japan
Phone: +81-3-3246-5091
Fax: +81-3-3246-5096
e-mail: sec-pr@shinetsu.jp

Common Stock Price



Trading Volume

